



## Argyle Road, Ealing, W13

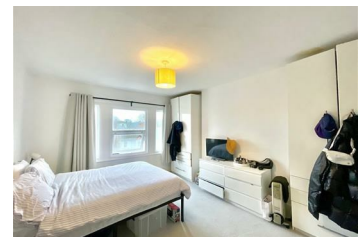
**£1,900 Per Month**

Spacious one bedroom flat is situated on the second floor in the heart of West Ealing, just a few minutes' walk from West Ealing station (Elizabeth Line).

The property comprises a bright living room with a separate kitchen, a large double bedroom and a spacious bathroom.

Located on the second floor, this flat enjoys an abundance of natural light, creating a bright and airy atmosphere throughout.

- Second floor flat
- Large bedroom
- Close to West Ealing station
- Bright reception
- Spacious bathroom
- Separate kitchen
- Communal garden



| Energy Efficiency Rating |           | Environmental Impact (CO <sub>2</sub> ) Rating |           |
|--------------------------|-----------|--|-----------|
| Current                  | Potential | Current  | Potential |
| <b>A</b>                 | <b>A</b>  | <b>A</b>                                       | <b>A</b>  |
| <b>B</b>                 | <b>B</b>  | <b>B</b>                                       | <b>B</b>  |
| <b>C</b>                 | <b>C</b>  | <b>C</b>                                       | <b>C</b>  |
| <b>D</b>                 | <b>D</b>  | <b>D</b>                                       | <b>D</b>  |
| <b>E</b>                 | <b>E</b>  | <b>E</b>                                       | <b>E</b>  |
| <b>F</b>                 | <b>F</b>  | <b>F</b>                                       | <b>F</b>  |
| <b>G</b>                 | <b>G</b>  | <b>G</b>                                       | <b>G</b>  |

England & Wales 2008/1/EC